



Saddleworth White Rose Society

In the County of York

Newsletter No 11 Summer 2001
YORKSHIRE DAY CELEBRATIONS
SUNDAY, 29 JULY 2001 AT SADDLEWORTH MUSEUM
Commencing 11.00am

- 11.00am ... The Chairman of Saddleworth Parish Council, councillor John Angrove will place a garland of white roses on the Ammon Wrigley statue.
- 11.15am ... Boarshurst Junior Band play until 12.15pm with a short break at a 11.26am when Gilbert Symes will read the Yorkshire Declaration of Integrity.
- 12.15pm ... Saddleworth Morris Dancers perform.
- 01.15pm ... Martin Stimpson and George Hardley with songs and dialect verse. There will also be a fancy dress for :- Children up to 7 years, Children 7 years to 14 years, Big Sisters and Mums Fancy Hats
- 12.00 'til 2.00 ... The tea bar in the Museum Gallery will be open. There will be no charge for admittance to the Gallery and there will be a SWRS stand displaying maps of Saddleworth and the Meres plus photographs of Saddleworth locations and SWRS material. The canal boat "Moonraker", decked out for Yorkshire Day, will be taking passengers on canal trips. Also decked out for Yorkshire Day will be member Mrs. Christine Barrow's canal boat "The Saddleworth White Rose".
- 2.30pm ... The Yorkshire Pudding Walk to the Church Inn, Uppermill

A Yorkshire Pudding meal will be available at the Church Inn at a cost of £4.95 per head, followed by the launch of the White Rose Ale, brewed at Yorkshire's smallest brewery, the Saddleworth Brewery, at the Church Inn, Uppermill, especially for the occasion. Please send cheque's for the meal, in advance to :

Mrs. E. Bardsley,
Secretary, Saddleworth White Rose Society.
52, Church Road, Uppermill,
Saddleworth, Yorkshire. OL3 6EJ

THE BORDER WALK

After careful consideration it was unanimously decided by the committee to cancel this year's Border Walk. The main purpose of this walk was to demonstrate the continued existence of the Yorkshire / Lancashire border where it has been for over a thousand years. However, under the circumstances, we felt that it would be totally unfair to proceed with this event and put at risk the livestock of our local farmers. Hopefully, next year we will have no problems.

YORKSHIRE TEA PARTY

A very enjoyable afternoon took place at Riverside House in Uppermill on Friday, 4th. May. Our chairman, Chris Dronsfield talked about Saddleworth's place within Yorkshire. Mike Buckley presented a slide views of Saddleworth and the history of the "4 Meres". Gilbert Symes entertained the residents with local songs and Monologues.

THE YORKSHIRE COUNTRYWOMEN'S ASSOCIATION SADDLEWORTH BRANCH

It has been suggested that the SWRS organise a branch of the Yorkshire Countrywoman's Association in Saddleworth. The branch would hold monthly meetings and be linked to the headquarters in Tadcaster. An initial meeting to discover the interest in such an association will be held in the autumn. Watch out for details in the Autumn Newsletter.

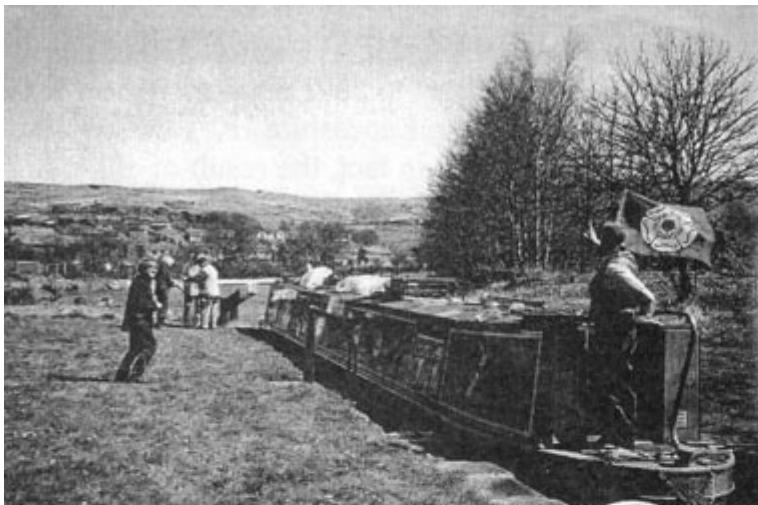
Anne Parry

NEWSPAPER MISINFORMATION

Many of our members have been infuriated by references in the local press suggesting that Saddleworth locations are a part of Oldham. The fact is that Saddleworth is a part of Oldham Metropolitan Borough but not a part of Oldham. It would be less offences if these places were referred to as "Borough" or "OMB", or preferably "Saddleworth" but most certainly not as "Oldham", which is, after all, a neighbouring town. This seemingly harmless practice does, in fact, fuel the myth and lead strangers and even some locals into wrongly believing Saddleworth is part of Oldham. We do not wish to be disrespectful to Oldham but we are not a part of that town or a suburb of it or indeed, a part of any town, nor do we wish to be! We would suggest therefore that if this sort of error is spotted by members in any publication, that the proprietors of that publication be reminded of the facts. This should only require a short note and a second class stamp and hopefully, if enough of us complain, we may be taken notice of especially if the publication concerned believes its circulation may suffer.

THE HUDDERSFIELD NARROW CANAL BRITISH WATERWAYS

British Waterways have produced a free booklet "A Guide to the Huddersfield Narrow Canal". The booklet contains a full page on Saddleworth. The page opens with the words: "Saddleworth lies in the West Riding of Yorkshire". In recent months, we have provided British waterways with information about Saddleworth and are thrilled that they have obviously taken note of it. This booklet will be read by both visitors and locals and will help to make thousands of people aware that Saddleworth is in Yorkshire. Congratulations to British Waterways!



On the 1st May 2001 at the opening of the Stanedge Canal Tunnel, the New Zealand owned WATEA (Maori for 'freedom of the water') flies the Yorkshire flag.

On the 18th May 2001, at the official opening of the Saddleworth section of the Huddersfield Narrow Canal, we had member Christine Barrow's canal boat 'Saddleworth Rose' representing The Saddleworth White Rose Society.



A Study in Molecular Biology by The Treasurer

A recent study carried out at The Institute of Molecular Biology found that a recessive gene in Yorkshiremen has caused them to have unusually short arms. Though scientists at Great Crosby University in Lancashire HQ FORL claim that this was not an accident of nature and was, in fact, the result of either selective breeding, carried out many centuries ago by the Yorkshire Ridings Society or by Genetic Engineering pioneered at their laboratory at Fenwick University. Meanwhile, at the The Fashion Institute, Marsden, researchers discovered that probably due to Yorkshire's long involvement in the textile industry and possibly because of past recessions, the pockets of Yorkshiremen trousers are rather deep. This unfortunate coincidence has, in some cases, caused problems of accessibility for some SWRS members wishing to pay their subscriptions. So, the Department of Human Behaviour at Craven University HQ CTI have come up with a possible solution to this dilemma. If one Yorkshireman stands on the seat of a dining room chair whilst another Yorkshireman (a very close blood relative and certainly not a wife) stands closely beside him, the relative may just about be able to reach to the bottom of the offending pocket of his friend and a quick upward jerk may, in some cases, result in the recovery of a small amount of money. Just enough perhaps to pay, for example, a subscription fee. This operation should be carried out in the privacy of ones own home and should certainly not be attempted in a place where things are on sale. A step-by-step illustrated instruction leaflet of the procedure will be forwarded to members on receipt of a SAE.

©Saddleworth White Rose Society